

# NAVIGATION

## SECTION II-E

---

- **Intro to Navigation**



# INTRO TO NAVIGATION

## Why do we need navigation skills for SAR?

- locate and search an assigned area
- move efficiently within an assigned area
- direct additional resources to a location (e.g. when subject is located)
- prevent search teams from becoming lost



# INTRO TO NAVIGATION

## What do we need to know to navigate in SAR?

### Location

- our location
- target location

### Direction

- current direction of travel
- direction of our target location

### Distance

- between start and current location
- between current and desired location



# INTRO TO NAVIGATION

## What tools do we use to navigate in SAR?

(i.e. find location, direction, and distance)

### Maps

- topographic maps
- satellite image maps
- digital or paper

### Compass

### GPS Units

### Other

- pacing
- flagging tape



# INTRO TO NAVIGATION

## How do we choose which tools to use?



Urban

VS.



Rural

# INTRO TO NAVIGATION

How do we choose which tools to use?



Trails and open spaces

VS.



“pushing bush” or low visibility

# INTRO TO NAVIGATION

How do we choose which tools to use?



Straight lines

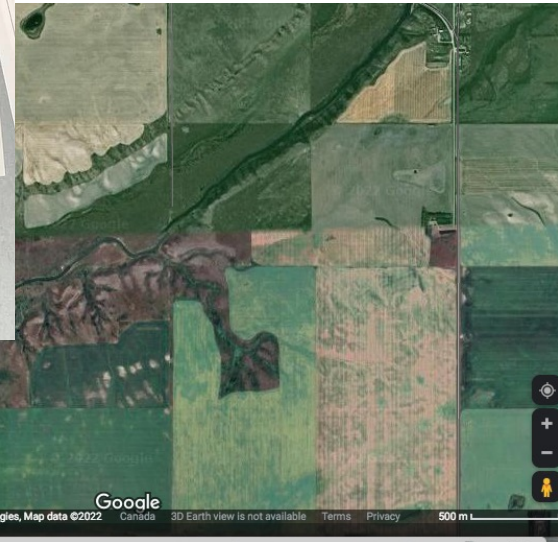
VS.



Following features

# INTRO TO NAVIGATION

## How do we choose which tools to use?



Map availability

