

NAVIGATION

SECTION II-E

- CalTopo



CalTopo

Download the Mobile App

Available on Google Play or Apple's App Store



CalTopo 4+

Backcountry mapping evolved

[CalTopo LLC](#)

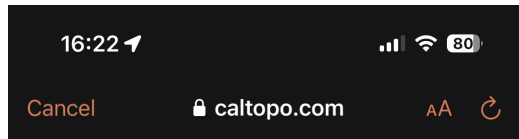
#90 in Navigation

★★★★★ 4.8 • 2.8K Ratings






Free

Note: some people call CalTopo “SarTopo” – it is the same thing, but search for “CalTopo” to find the app

SIGN UP



Log In

-  Continue with Google
-  Continue with Apple
-  Continue with Facebook
-  Continue with Microsoft
-  Continue with Yahoo
- Remember Me

[Team Login](#)

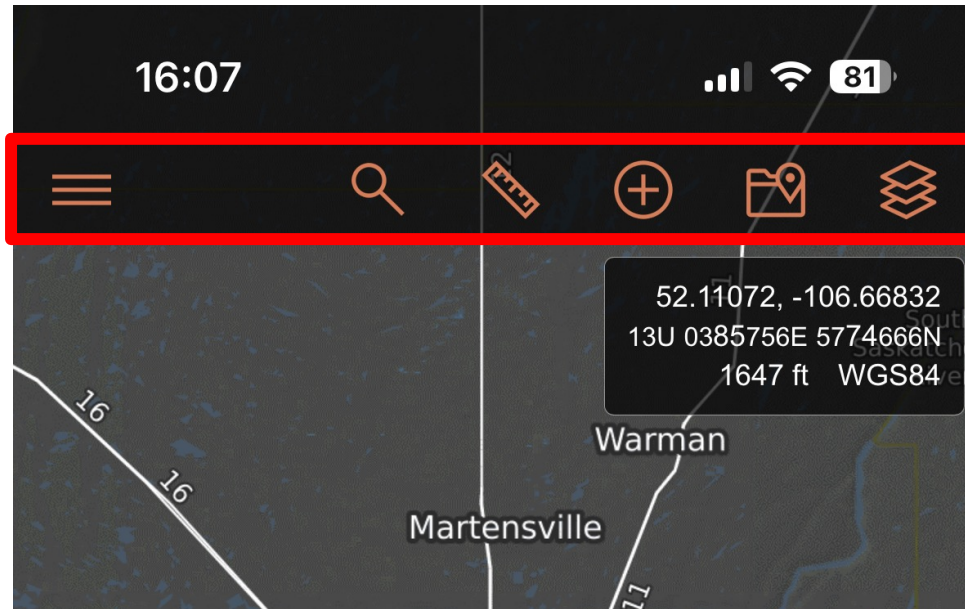
[Sign Up](#)

[Terms of Use](#) | [Privacy Policy](#) | [FAQ](#)

1. SSAR adds you to the SSAR account
2. CalTopo sends you a log in link
3. Click on the log in link
4. Log in by choosing a log in partner
5. You will be taken to the Map Viewer



MENU BAR



Main Menu: access saved maps, map sheets and track, scan a QR code, etc.

Search: search for a location by name or with coordinates

Measure: gather information without saving anything to the map

Add Map Items: add map objects and custom layers

Map Items: view and edit existing map objects and custom layers

Map Layers: access base layers, map sheets, and overlays

MAPS

Maps

Search Managers will create a specific Map for use during a training exercise or during an activation

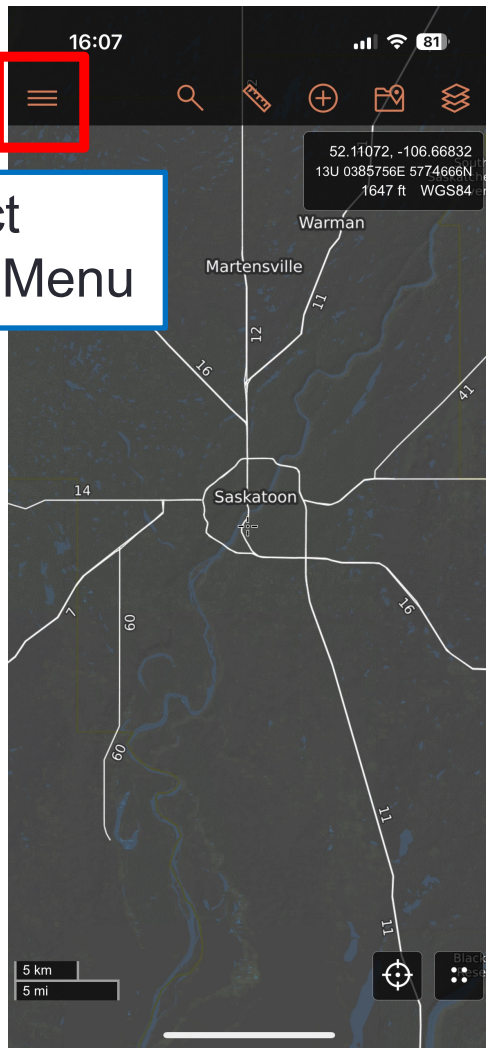
If you do not have the correct Map open, you will not be integrated with your team on the app

Individual Maps are located within Map Folders (e.g. SSAR Activation Data, SSAR Training Data) that are located in the Main Menu

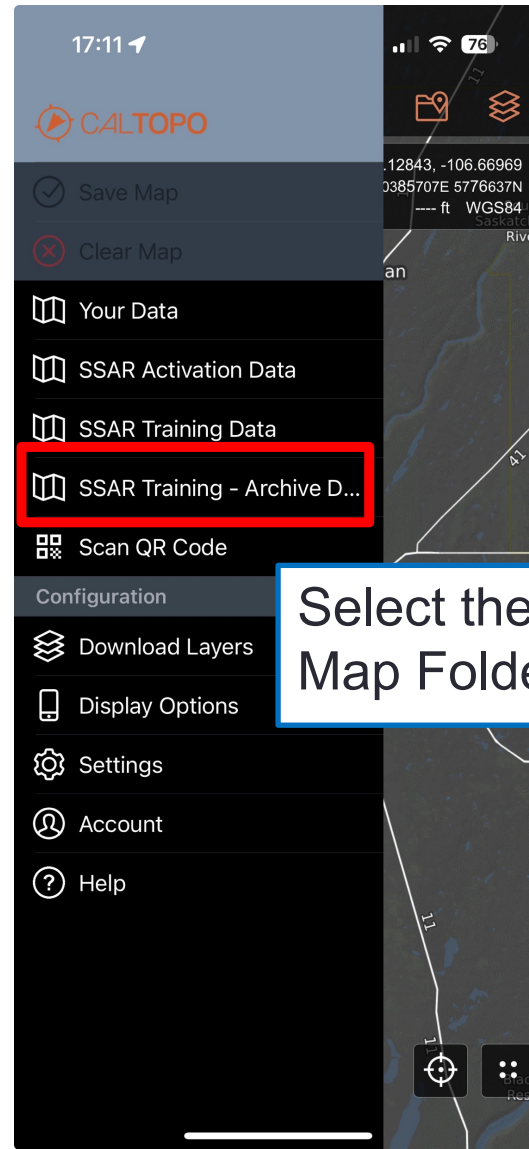
The first thing you need to do once logged in to CalTopo is to choose the Map your team is using that day

OPENING MAPS

Open a SSAR Map Folder



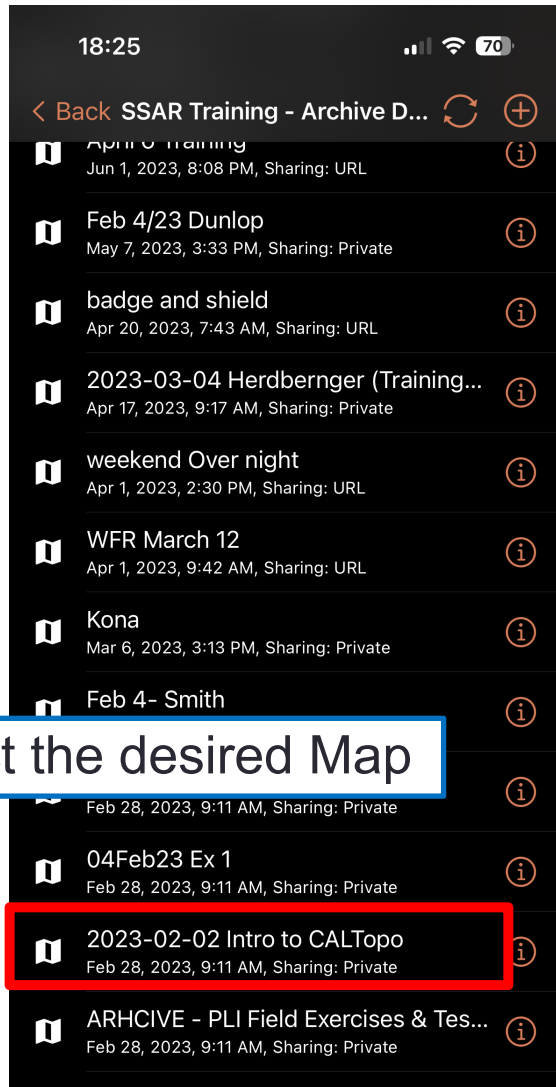
Select
Main Menu



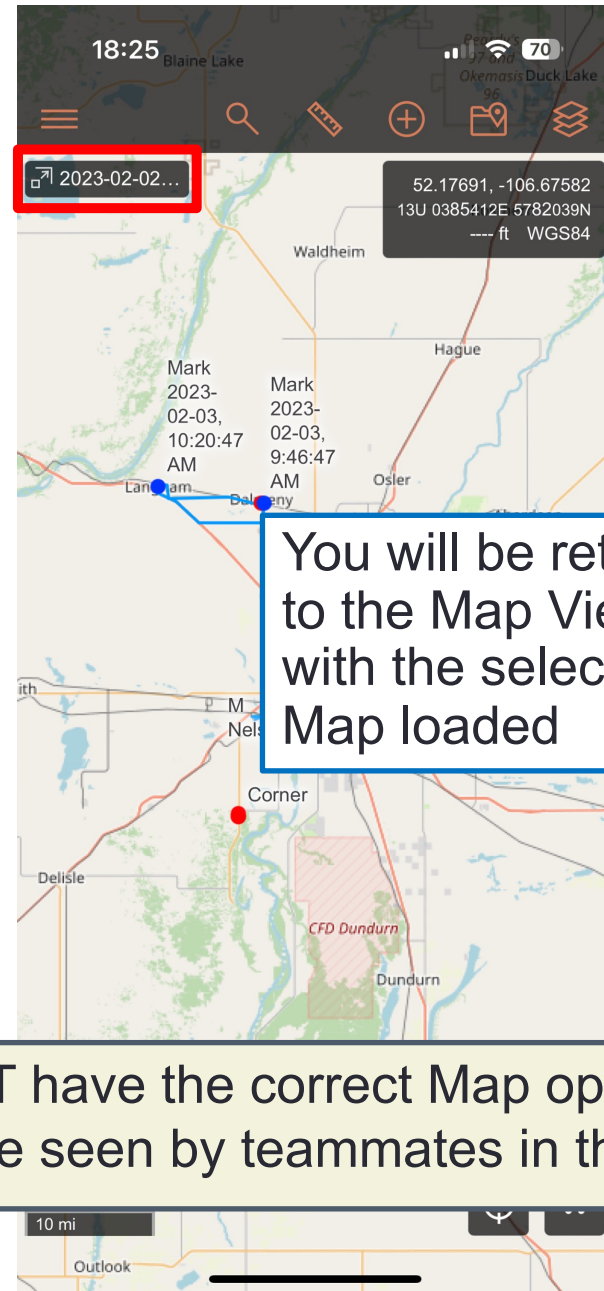
Select the desired
Map Folder

OPENING MAPS

Open a SSAR Map



Select the desired Map



You will be returned to the Map Viewer, with the selected Map loaded

You MUST have the correct Map open to see and be seen by teammates in the app!

MAP LAYERS

To customize your Map view, you can add/change Map Layers (it will only change the view on your phone, not the view for the whole team)

Map Layers

Images/data that you can stack to see what you want on your map

Base Layers

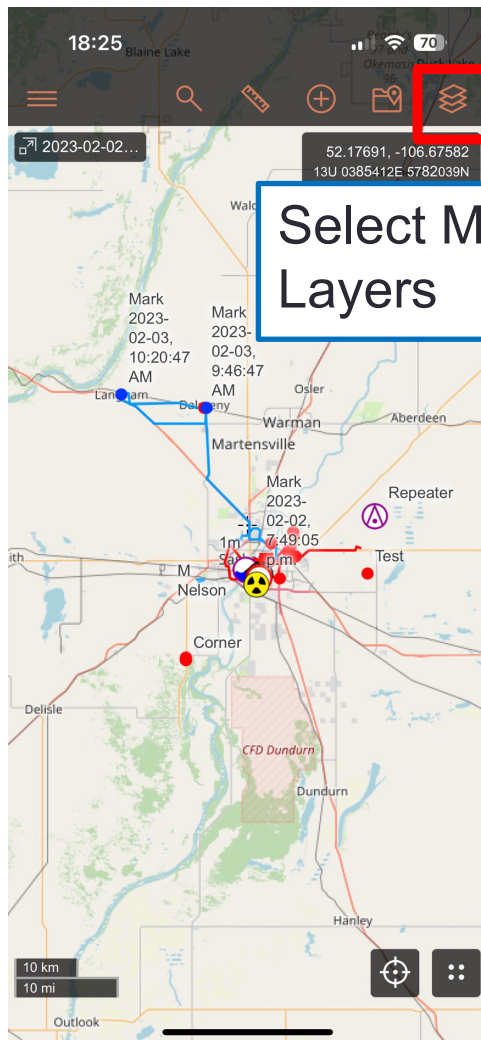
- Digital maps or imagery that make up the background or foundation of your map
 - E.g. topographic maps, satellite imagery, street maps, etc.

Sheets and Overlays

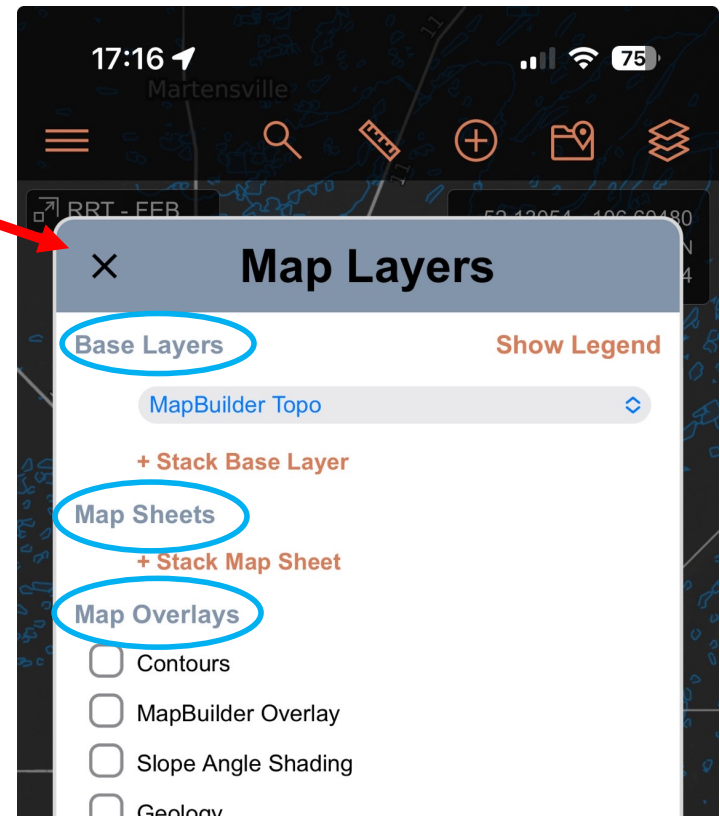
- Images or graphics you can toggle on or off to add additional information to your map
 - E.g. contours lines, public lands, parcel data, etc.

MANAGING MAP LAYERS

Open Map Layers Menu

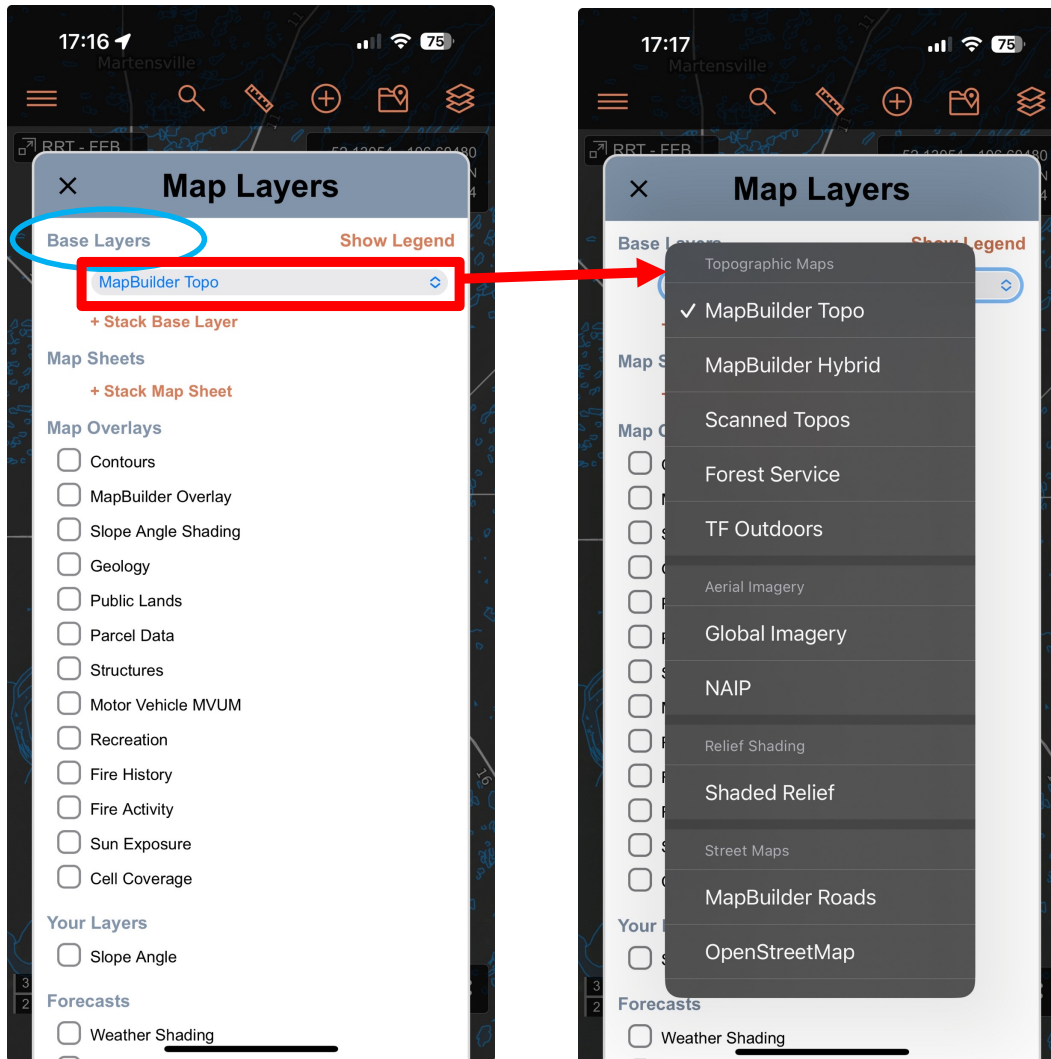


Select Map Layers



MANAGING MAP LAYERS

Choose a Base Layer



Choose a Base Layer that is most helpful for the area and the task. Try different ones and see what works best for you.

For urban searches, recommend:

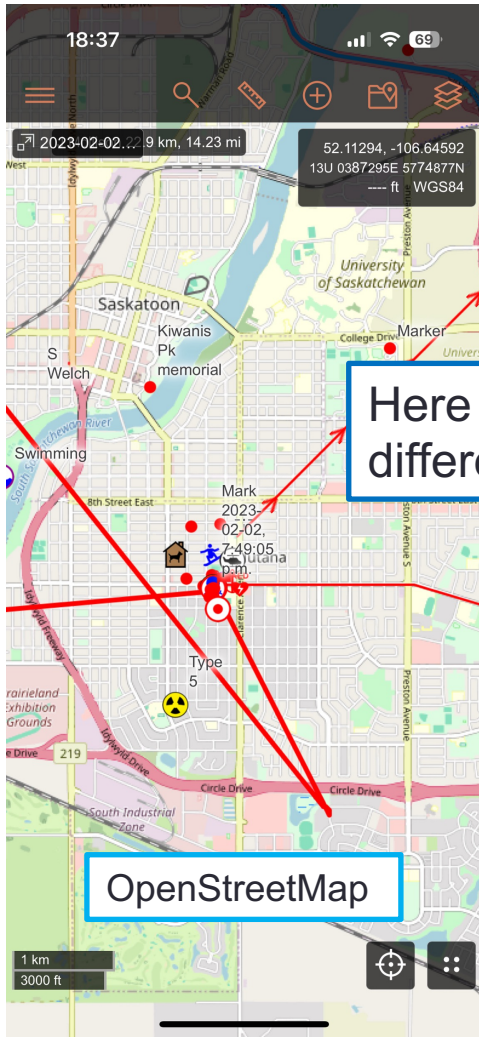
- TF Outdoors
- OpenStreetMap

For rural, you may prefer:

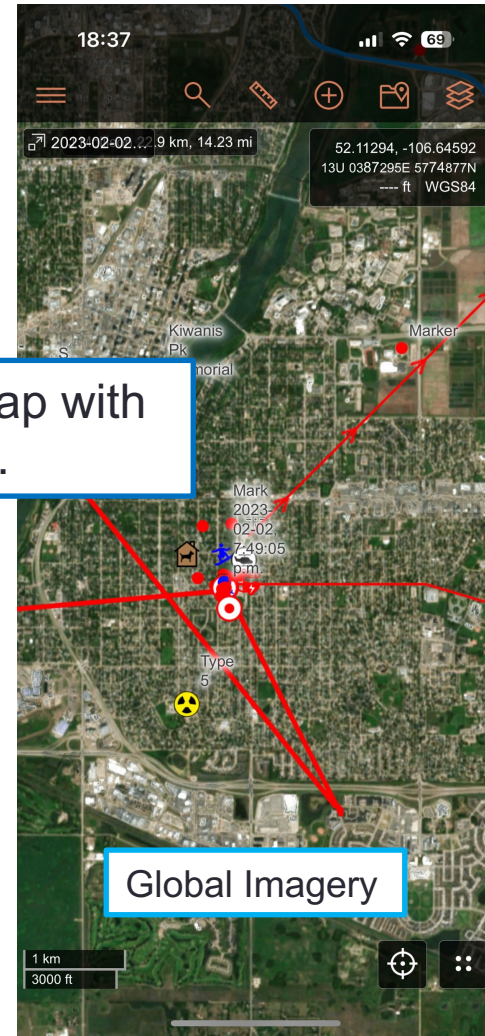
- MapBuilder Topo
- Global Imagery (satellite)

MANAGING MAP LAYERS

Base Layer Examples



Here is a view of the same map with different Base Layers chosen.



MANAGING MAP LAYERS

Add Map Sheets (optional)

17:16
Martensville

Map Layers

Base Layers Show Legend

MapBuilder Topo

+ Stack Base Layer

Map Sheets

+ Stack Map Sheet

Map Overlays

Contours

MapBuilder Overlay

Slope Angle Shading

Geology

Public Lands

Parcel Data

Structures

Motor Vehicle MVUM

Recreation

Fire History

Fire Activity

Sun Exposure

Cell Coverage

Your Layers

Slope Angle

Forecasts

Weather Shading

17:17
Martensville

Map Layers

Base Layers Show Legend

MapBuilder Topo

+ Stack Base Layer

Map Sheets

X @ 0 %

SSAR Training Sheets

COS Index Nhoods Map

Map C

17:21
Martensville

Map Layers

Base Layers Show Legend

TF Outdoors

+ Stack Base Layer

Map Sheets

X @ 100 %

Map

Structures

Motor Vehicle MVUM

Recreation

Fire History

Fire Activity

Sun Exposure

Cell Coverage

Your Layers

Slope Angle

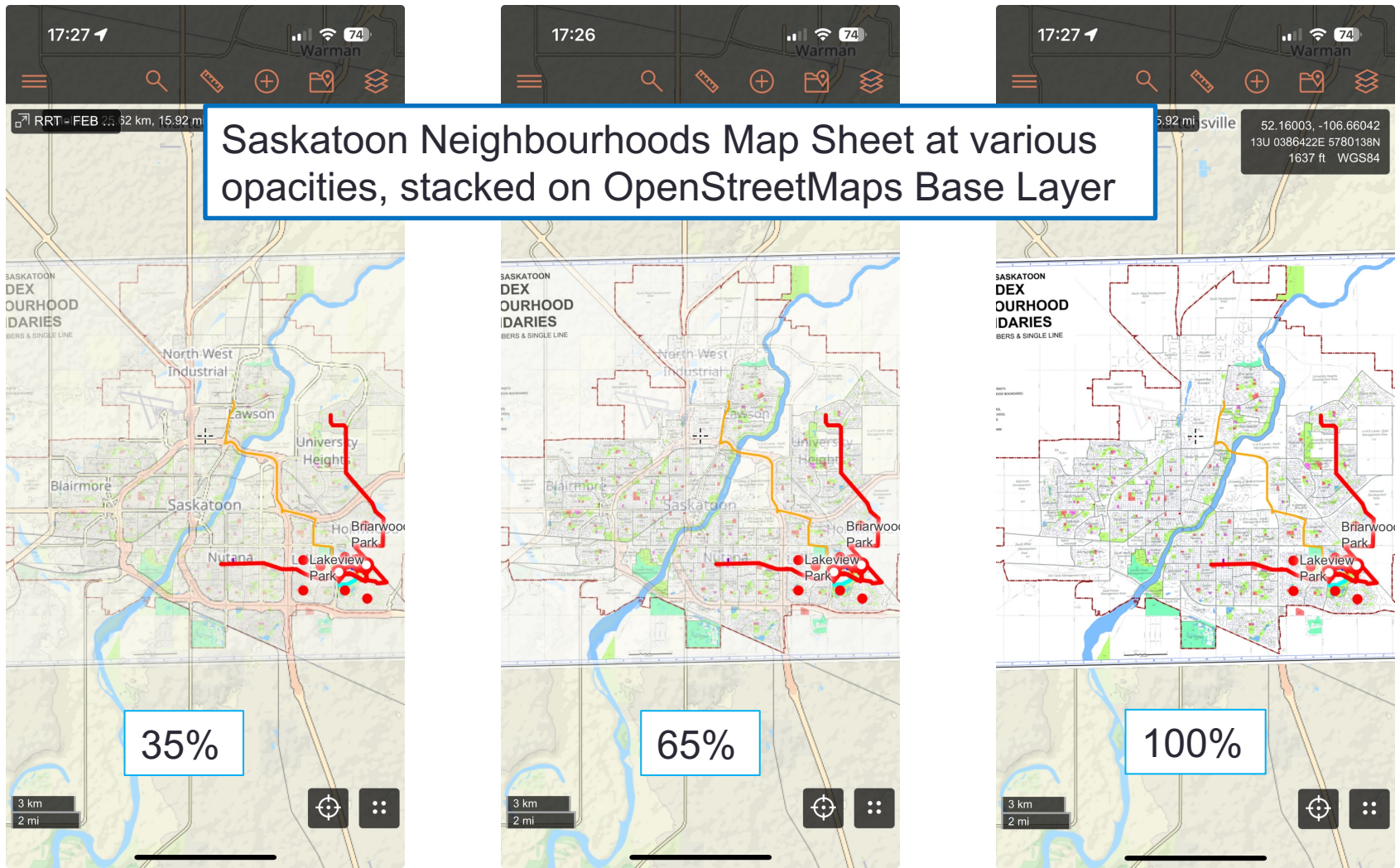
SSAR has created a neighbourhoods Map Sheet (“COS Index Nhoods Map”) that you can add to your Map when searching in Saskatoon.

Only add if/when helpful!

You need to change the opacity of the Map Sheet so you can still see the Base Layer

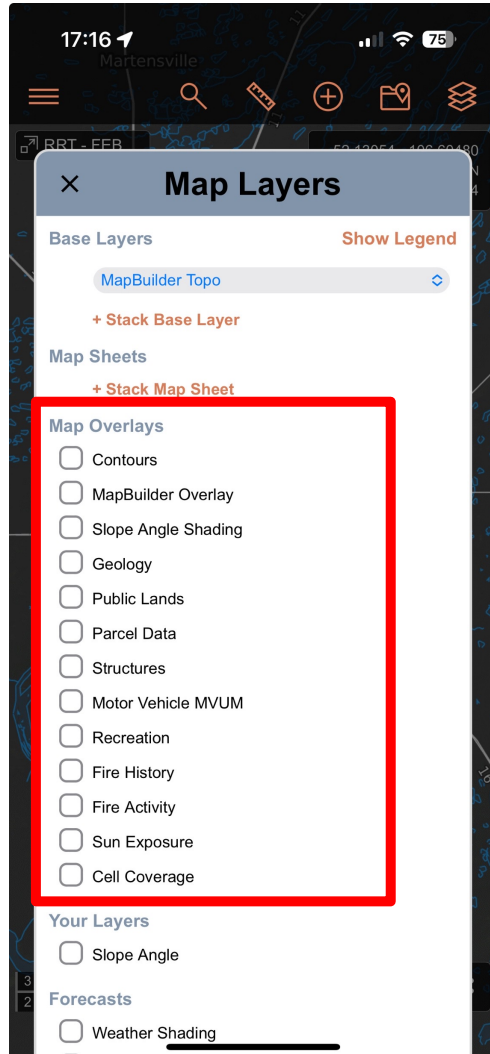
MANAGING MAP LAYERS

Map Sheets



MANAGING MAP LAYERS

Map Overlays (optional)



Other Map Overlays may be useful depending on the terrain and tasks given to you.

Click the check box beside a Map Overlay option to see it on the Map.

Again, only add if/when helpful.

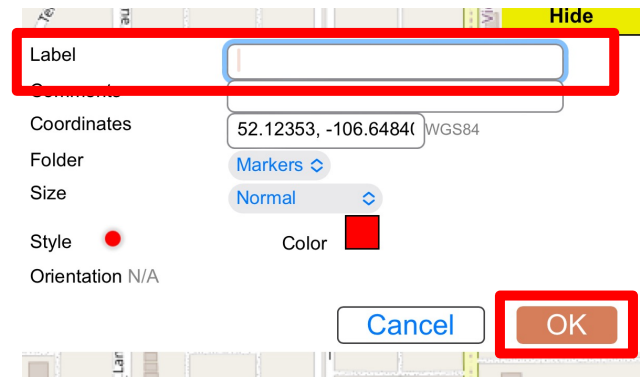
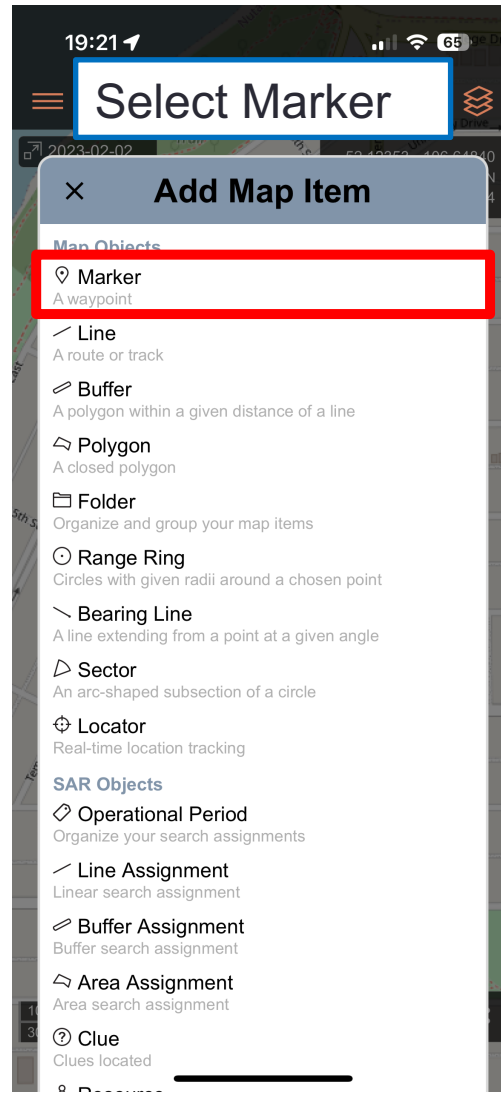
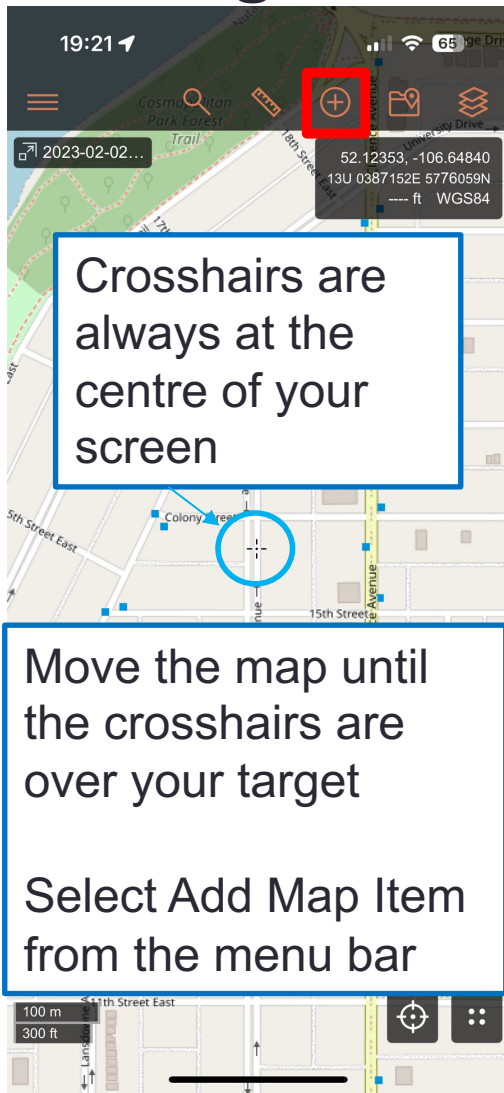
WAYPOINTS

There are two ways to mark waypoints on CalTopo:

- Using the crosshairs at the centre of the map
- Using your current position

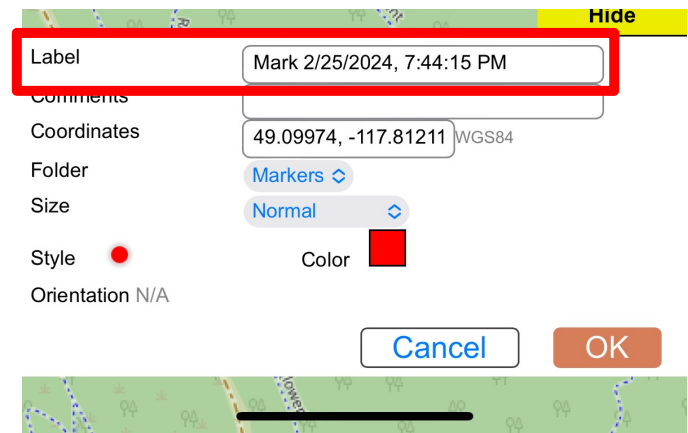
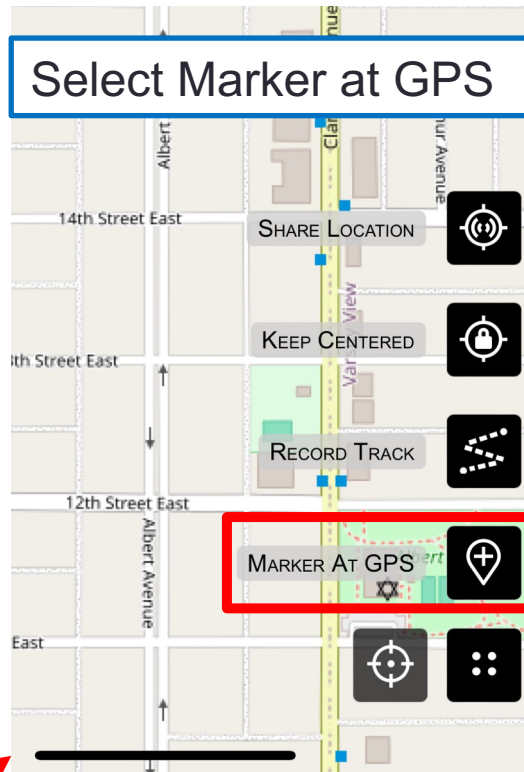
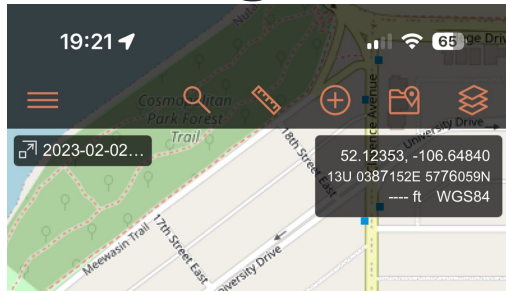
MARKING WAYPOINTS

Using Crosshairs



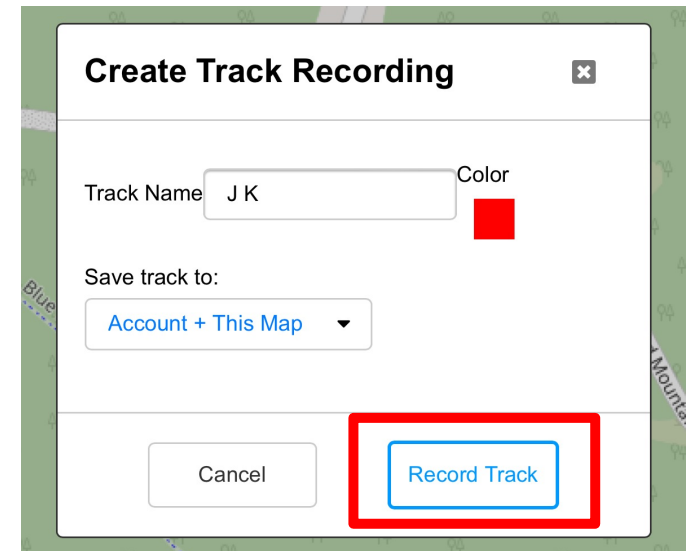
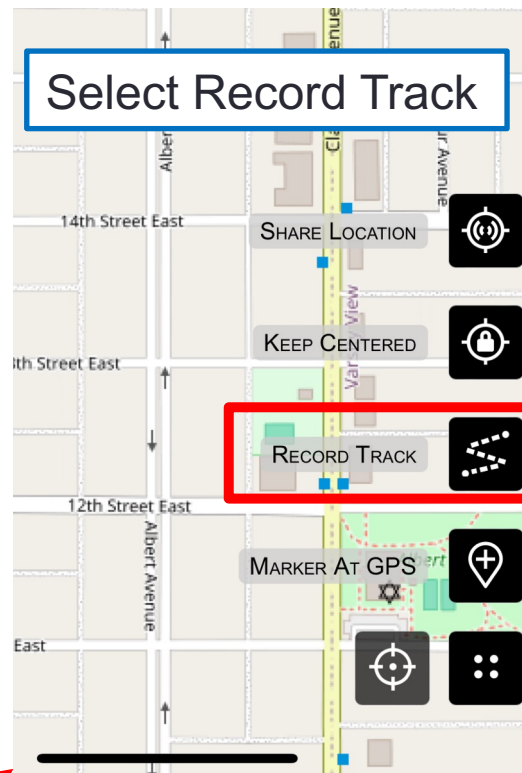
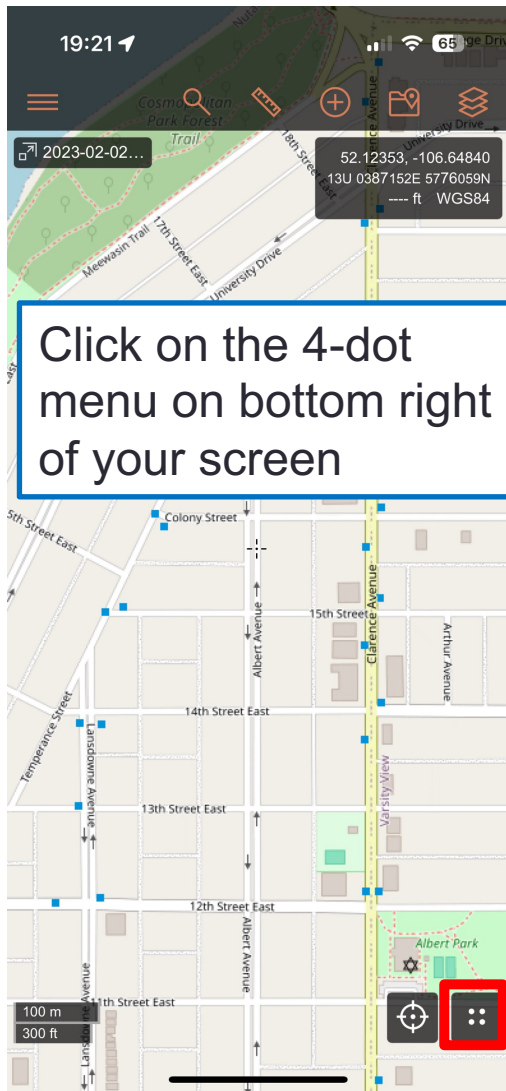
MARKING WAYPOINTS

Using Your Current Position



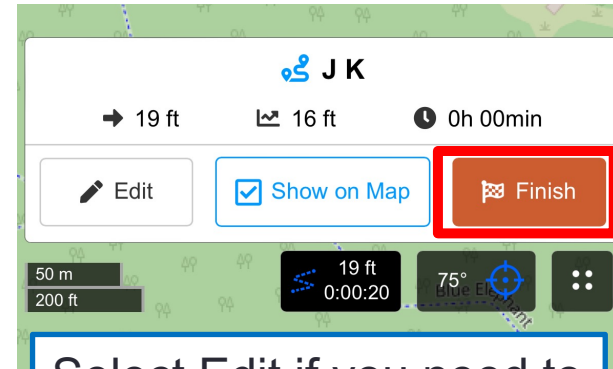
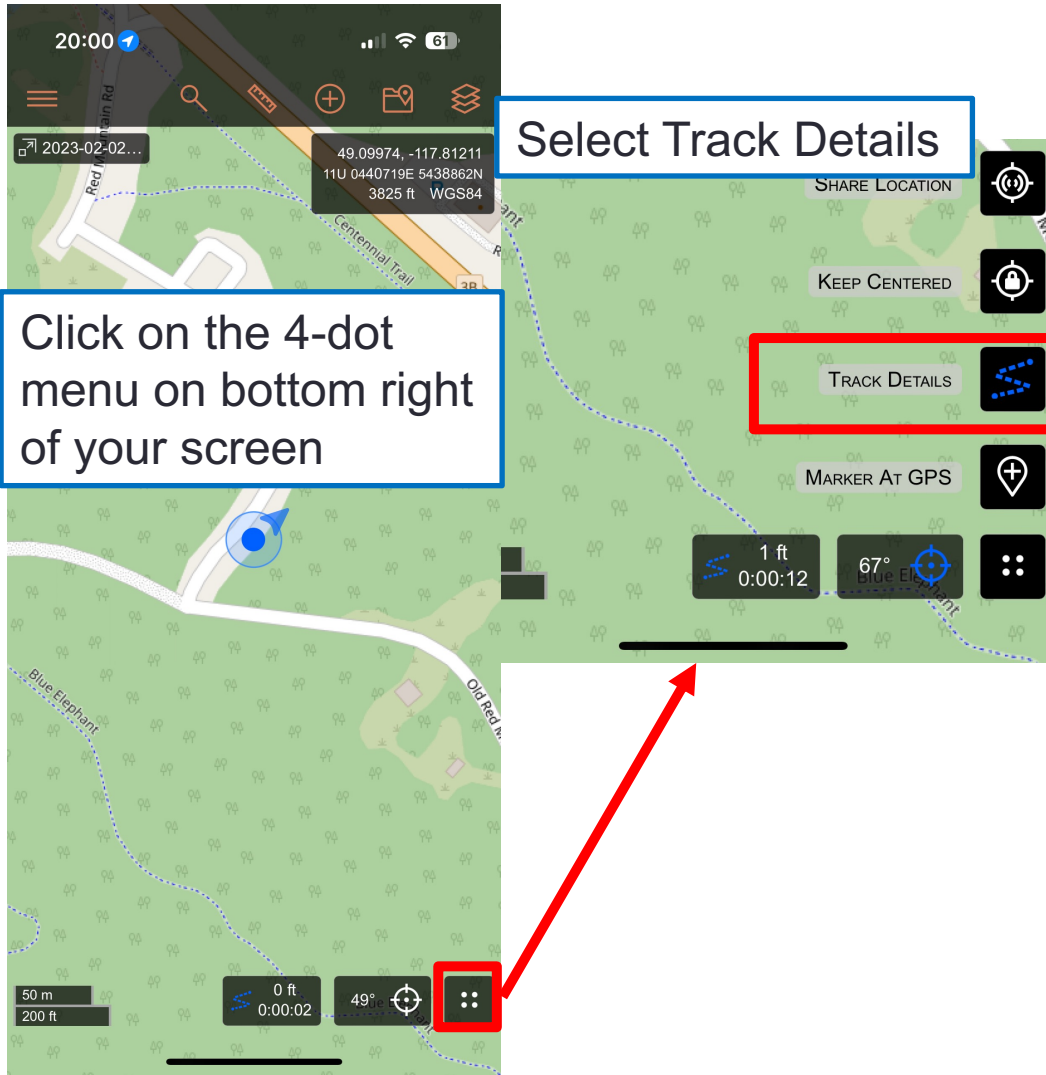
Replace the pre-filled Label with a short descriptor of the waypoint, then click OK

RECORDING TRACKS

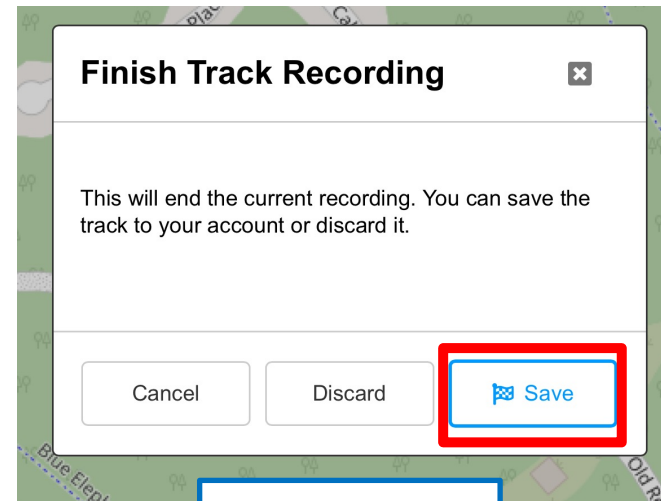


Name your track, ensure track is set to save to Account + This Map, click Record Track

SAVING TRACKS

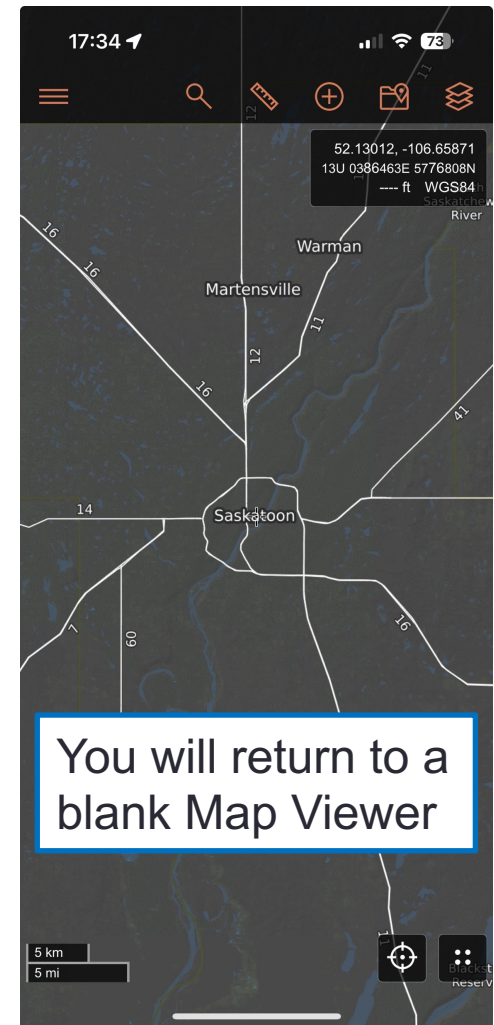
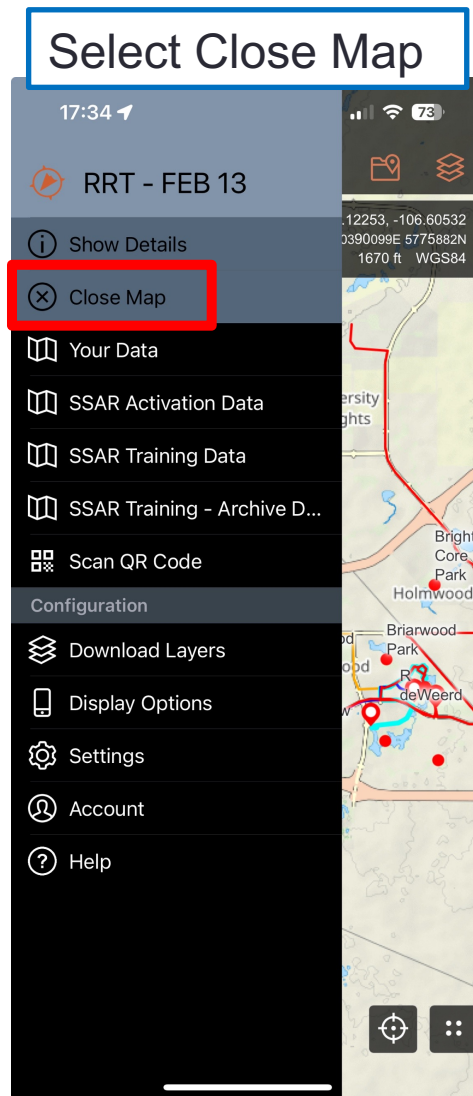
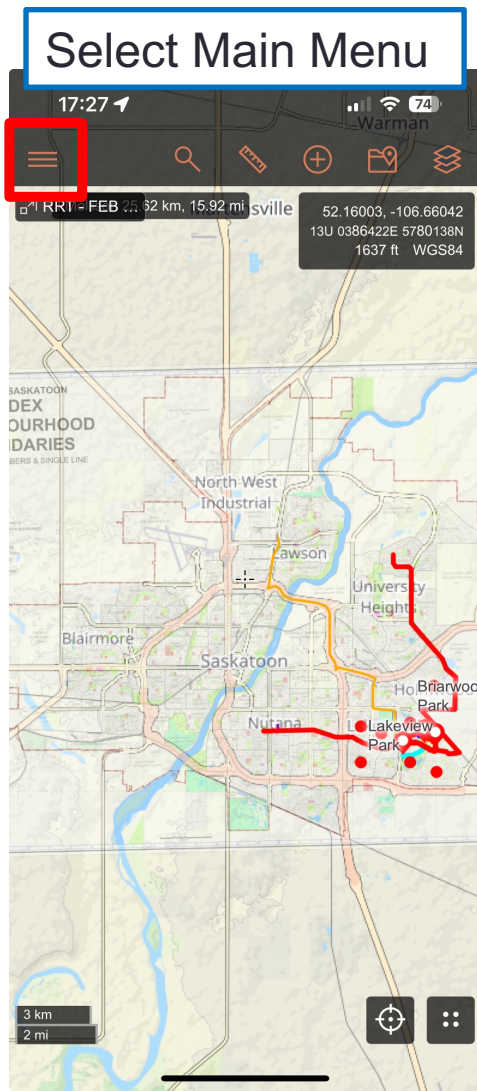


Select Edit if you need to rename your track, or select Finish



Select Save

CLOSING MAPS



CALTOPO TRAINING RESOURCE

For further assistance or to learn about additional features in CalTopo, visit <https://training.caltopo.com/>

